

# Southern Willamette Valley Groundwater Management Area

## Nitrate Values in the Long-Term Monitoring Sites

Spring 2009

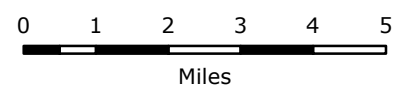
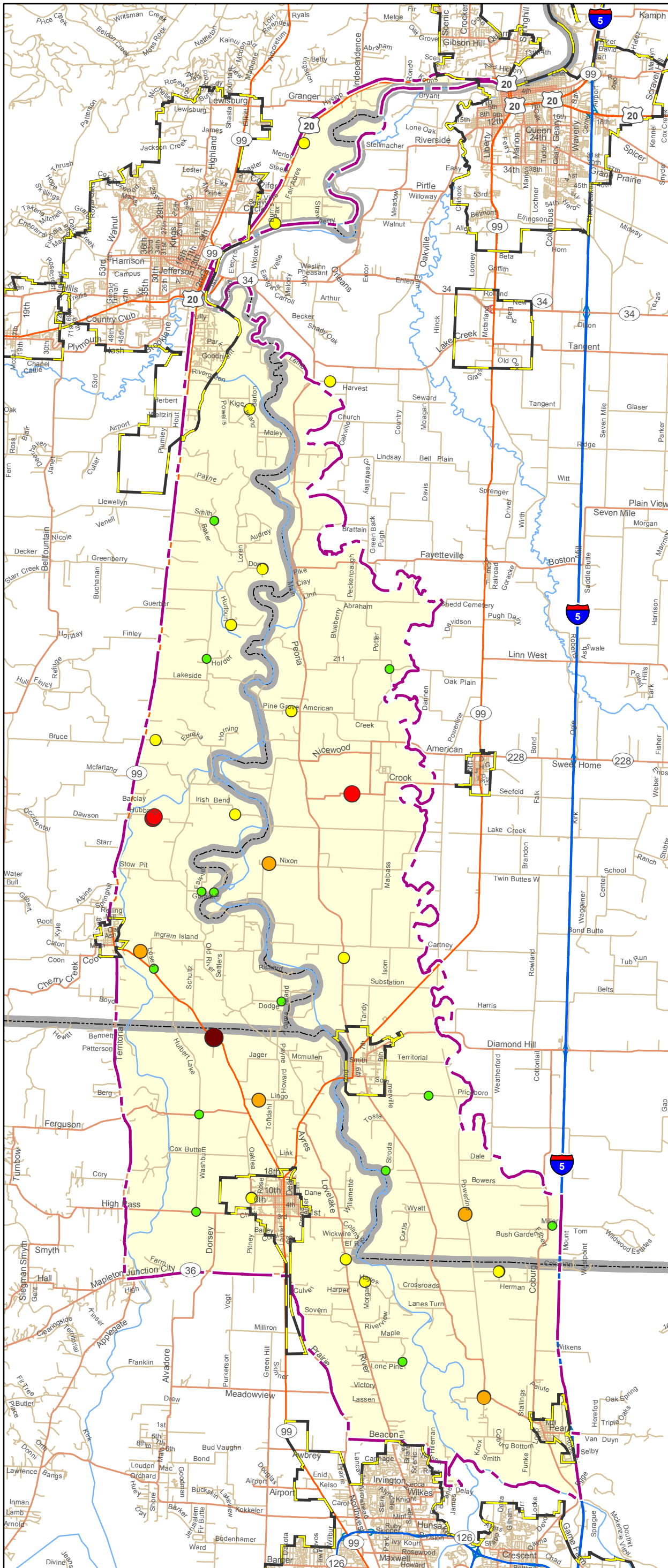
### Long Term Monitoring Wells Nitrate/nitrite as N mg/L

- 0.0 - 2.4
- 2.5 - 6.9
- 7.0 - 9.9
- 10.0 - 20.0
- 20.1 - 27.5

Groundwater Management Area

Urban Growth Boundaries

County Boundary



MAP PRODUCED BY:  
**LCOG**  
 LANE COUNCIL OF GOVERNMENTS  
 859 WILLAMETTE STREET, SUITE 500  
 EUGENE, OREGON 97403-2919  
 www.lcog.org (541) 682-4283