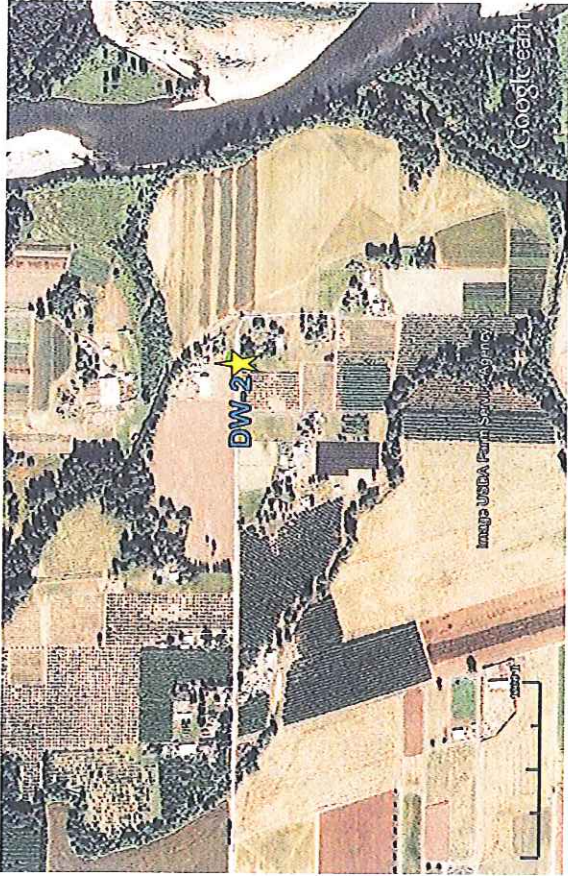
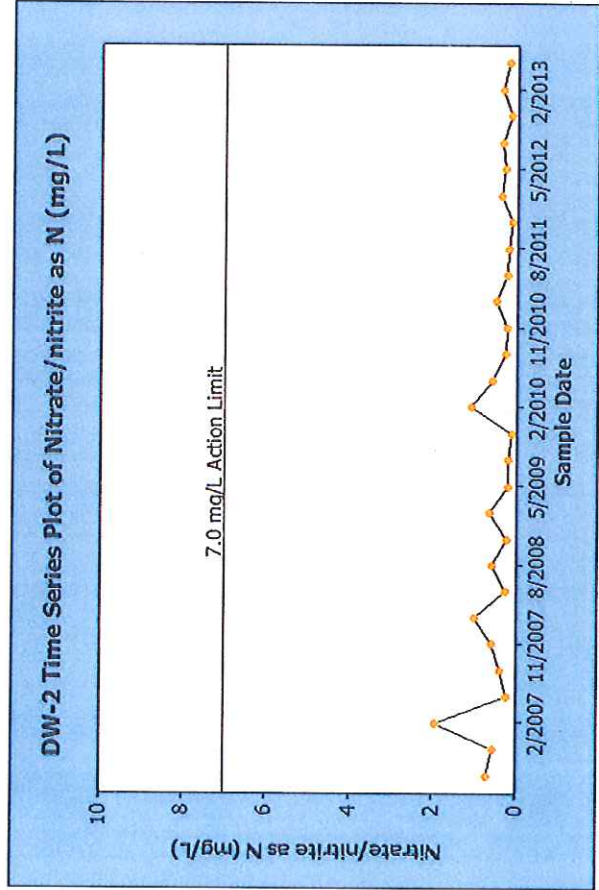


# Domestic Well DW-2



Sample Date	Nitrate/nitrite as N (mg/L)
<b>first 9 events = background</b>	
August-06	0.70
November-06	0.54
February-07	1.94
May-07	0.23
August-07	0.39
November-07	0.59
February-08	1.01
May-08	0.27
August-08	0.58
<b>Rest of data</b>	
November-08	0.23
February-09	0.65
May-09	0.20
July-09	0.21
November-09	0.11
February-10	1.08
May-10	0.59
August-10	0.25
November-10	0.23
January-11	0.51
May-11	0.23
August-11	0.21
November-11	0.12
February-12	0.39
May-12	0.29
August-12	0.35
November-12	0.14
February-13	0.36
May-13	0.21
<b>Mean last 8 samples</b>	<b>0.26</b>
<b>Difference last 8 samples mean minus background</b>	<b>-0.43</b>
<b>Std Deviation = 0.52</b>	
<b>Background Mean = 0.69</b>	
<b>Std Deviation = 0.25</b>	
<b>Nitrate values have DECREASED</b>	



# Domestic Well DW-3



## first 9 events = background

August-06	4.45
November-06	4.54
February-07	4.56
May-07	4.71
August-07	4.68
November-07	4.60
February-08	4.91
May-08	4.92
August-08	4.92

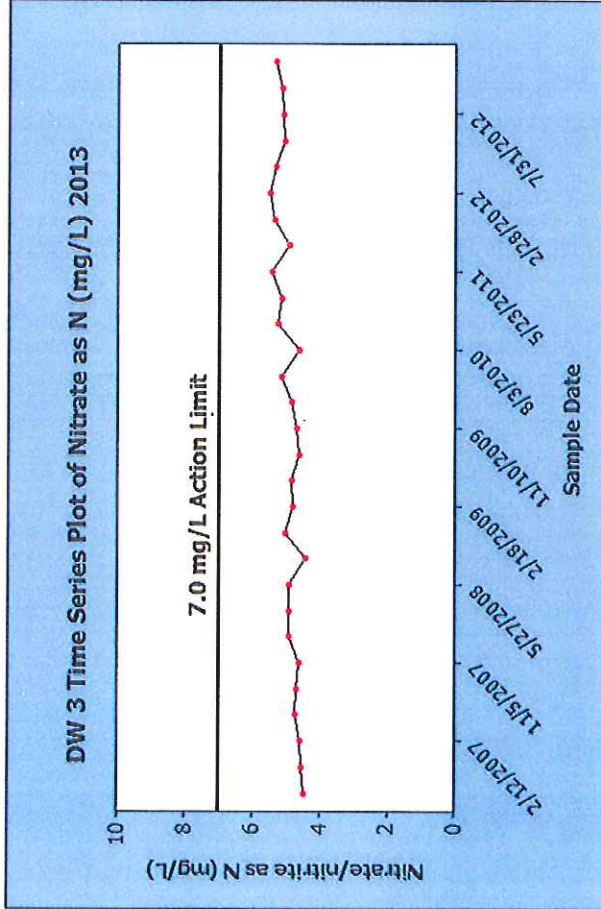
Std Deviation = 0.18  
Background Mean = 4.70

## Rest of data

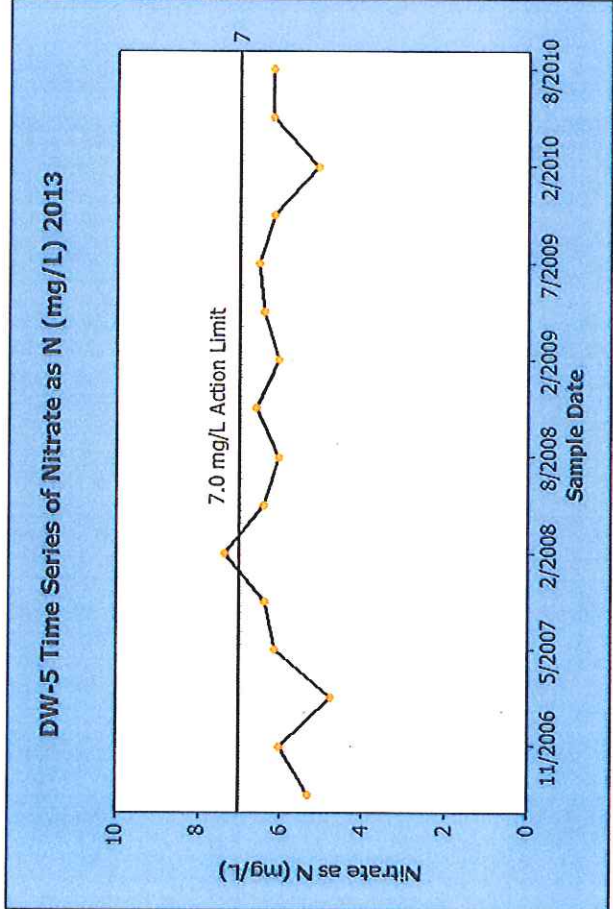
November-08	4.42
February-09	5.01
May-09	4.78
July-09	4.85
November-09	4.62
February-10	4.67
May-10	4.82
August-10	5.13
November-10	4.61
January-11	5.25
May-11	5.12
August-11	5.41
November-11	4.90
February-12	5.34
May-12	5.52
August-12	5.33
November-12	5.07
February-13	5.13
May-13	5.32

Std Deviation = 0.31  
Nitrate values have INCREASED

Mean last 8 samples 5.25  
Difference last 8 samples mean minus background 0.55



# Domestic Well DW-5



Month-Year	Nitrate as N (mg/L)
August-06	5.32
November-06	6.03
February-07	4.78
May-07	6.15
August-07	6.63
November-07	6.4
February-08	7.37
May-08	6.41
August-08	6.04
November-08	6.62
February-09	6.04
May-09	6.42
July-09	6.55
November-09	6.19
February-10	5.11
May-10	6.22
August-10	6.22
November-10	6.46
January-11	4.5
May-11	5.63
August-11	5.89
November-11	6.24
February-12	4.66
May-12	5.63
August-12	5.68
November-12	5.48
February-13	4.620
May-13	5.38

**first 9 events = background**

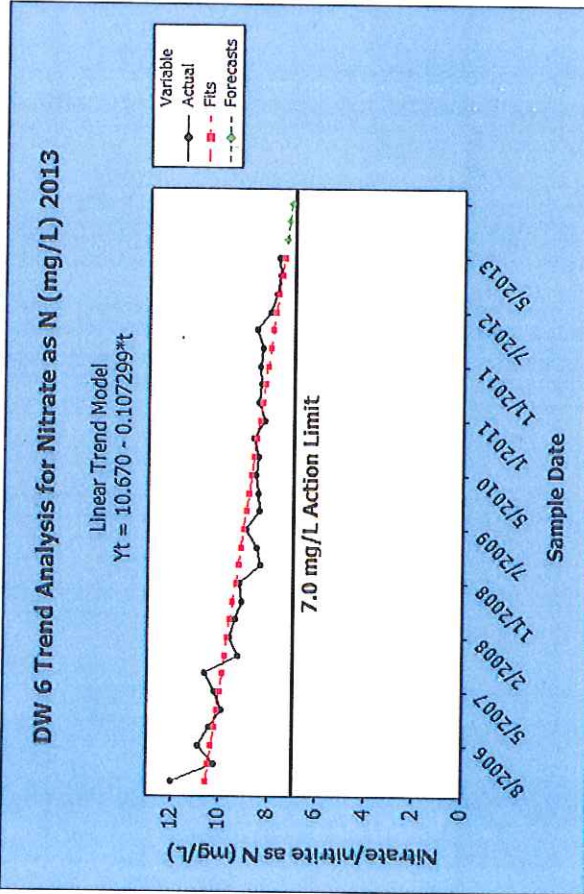
**Rest of data**

Std Deviation = 0.64  
Background Mean = 6.13

Mean last 8 samples = 5.45  
Difference last 8 samples mean minus background = -0.68

Std Deviation = 0.67  
Nitrate values have DECREASED

# Domestic Well DW-6



## first 9 events = background

August-06	10.90
November-06	10.40
February-07	9.91
May-07	10.20
August-07	10.60
November-07	9.24
February-08	9.61
May-08	9.35
August-08	9.09

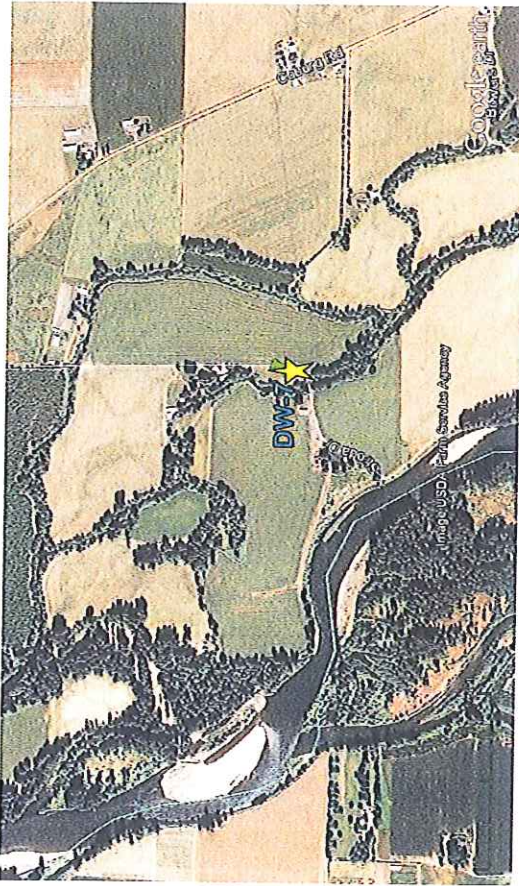
Std Deviation = 0.64  
 Background Mean = 9.92

## Rest of data

November-08	9.19
February-09	8.33
May-09	8.49
July-09	8.94
November-09	8.40
February-10	8.45
May-10	8.54
August-10	8.46
November-10	8.66
January-11	8.20
May-11	8.46
August-11	8.35
November-11	8.39
February-12	8.31
May-12	8.57
August-12	8.00
November-12	7.75
February-13	7.59
May-13	7.63
Mean last 8 samples	8.07
Difference last 8 samples mean minus background	-1.85

Std Deviation = 0.40  
 Nitrate values have  
 DECREASED

# Domestic Well DW-7



## first 9 events = background

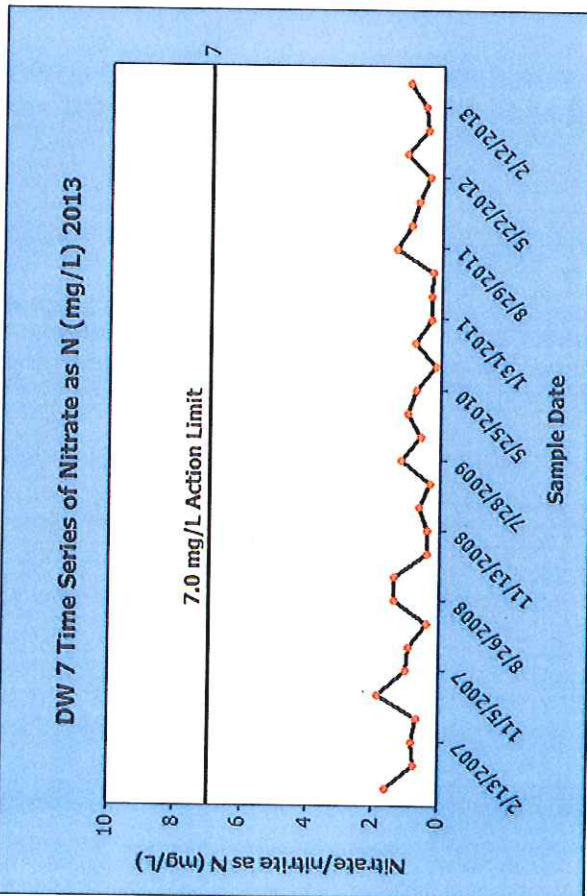
August-06	1.60
November-06	0.73
February-07	0.81
May-07	0.67
August-07	1.84
November-07	1.01
February-08	0.93
May-08	0.35
August-08	1.37

Std Deviation = 0.48  
Background Mean = 1.04

## Rest of data

November-08	0.38
February-09	0.63
May-09	0.30
July-09	1.19
November-09	0.59
February-10	0.98
May-10	0.72
August-10	0.13
November-10	0.78
January-11	0.29
May-11	0.27
August-11	1.35
November-11	0.93
February-12	0.69
May-12	0.38
August-12	1.06
November-12	0.44
February-13	0.51
May-13	1.00
Mean last 8 samples	0.80
Difference last 8 samples mean minus background	-0.24

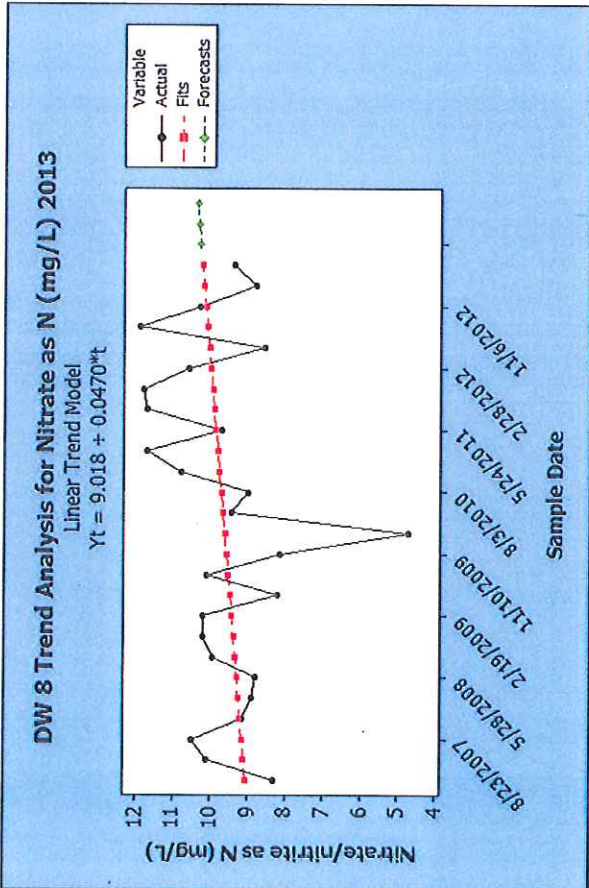
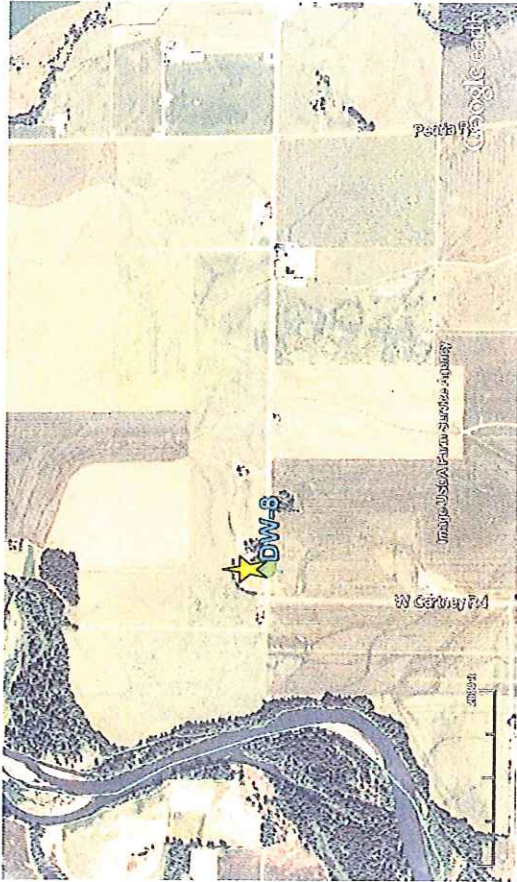
Std Deviation = 0.35  
Nitrate values are  
STEADY



DW 7 Time Series of Nitrate as N (mg/L) 2013

Sample Date	Nitrate/nitrite as N (mg/L)
2/13/2007	1.5
4/15/2007	2.0
8/15/2007	1.8
11/13/2008	2.2
5/15/2009	1.9
7/18/2009	2.1
5/15/2010	1.7
1/5/2011	2.3
8/15/2011	1.6
5/12/2012	2.0
2/12/2013	1.8

# Domestic Well DW-8



## first 9 events = background

August-06	10.50
November-06	9.16
February-07	8.91
May-07	9.02
August-07	8.79
November-07	9.94
February-08	10.20
May-08	10.20
August-08	8.21

Std Deviation = 0.79  
Background Mean = 9.44

## Rest of data

November-08	10.10
February-09	8.13
May-09	4.72
July-09	9.44
November-09	8.98
February-10	10.80
May-10	11.70
August-10	9.72
November-10	11.70
January-11	11.60
May-11	11.80
August-11	10.60
November-11	10.70
February-12	8.57
May-12	11.90
August-12	10.30
November-12	8.79
February-13	9.39
May-13	10.04

Std Deviation = 1.26  
Nitrate values have INCREASED

Mean last 8 samples  
Difference last 8 samples mean minus background = 0.60

# Domestic Well DW-9



## first 9 events = background

August-06	1.37
November-06	1.12
February-07	1.44
May-07	1.20
August-07	1.57
November-07	1.10
February-08	1.16
May-08	1.26
August-08	1.22

Std Deviation = 0.16  
Background Mean = 1.27

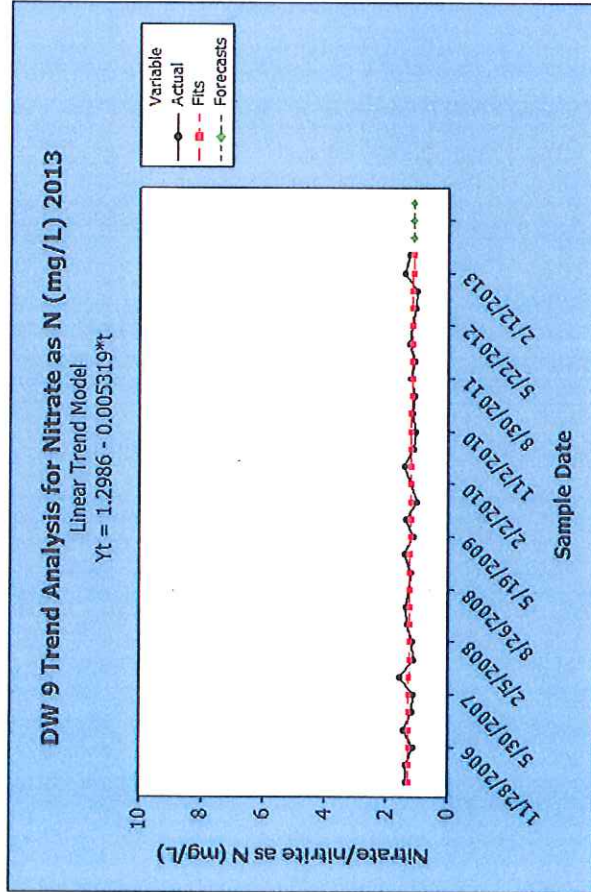
## Rest of data

November-08	1.18
February-09	1.38
May-09	1.11
July-09	1.37
November-09	0.98
February-10	1.19
May-10	1.38
August-10	1.10
November-10	1.05
January-11	1.17
May-11	1.09
August-11	1.19
November-11	1.08
February-12	1.24
May-12	1.16
August-12	1.04
November-12	0.99
February-13	1.41
May-13	1.25

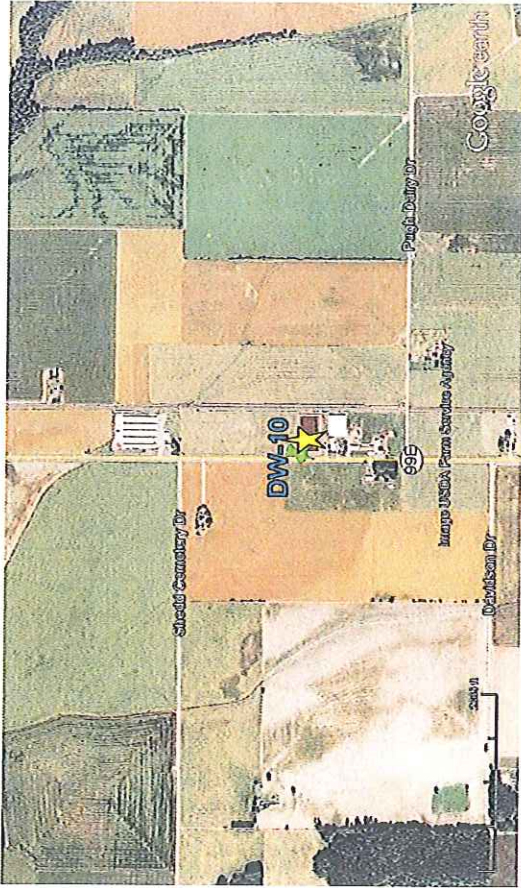
Mean last 8 samples  
Difference last 8 samples  
mean minus background

Std Deviation = 0.13  
Nitrate values are  
STEADY

-0.10

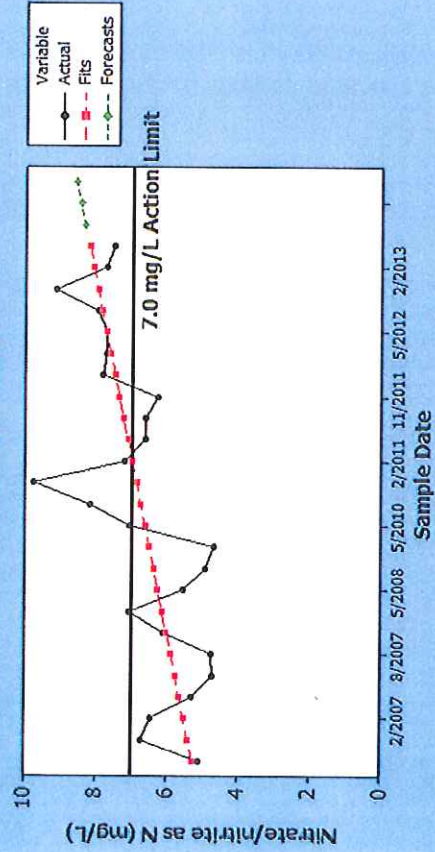


# Domestic Well DW-10



## DW 10 Trend Analysis for Nitrate as N (mg/L) 2013

Linear Trend Model  
 $Y_t = 5.182 + 0.123 * t$



### first 9 events = background

August-06	5.13
November-06	6.76
February-07	6.47
May-07	5.33
August-07	4.74
November-07	6.13
February-08	7.10
May-08	5.56
August-08	4.95

Std Deviation = 0.85  
 Background Mean = 5.80

### Rest of data

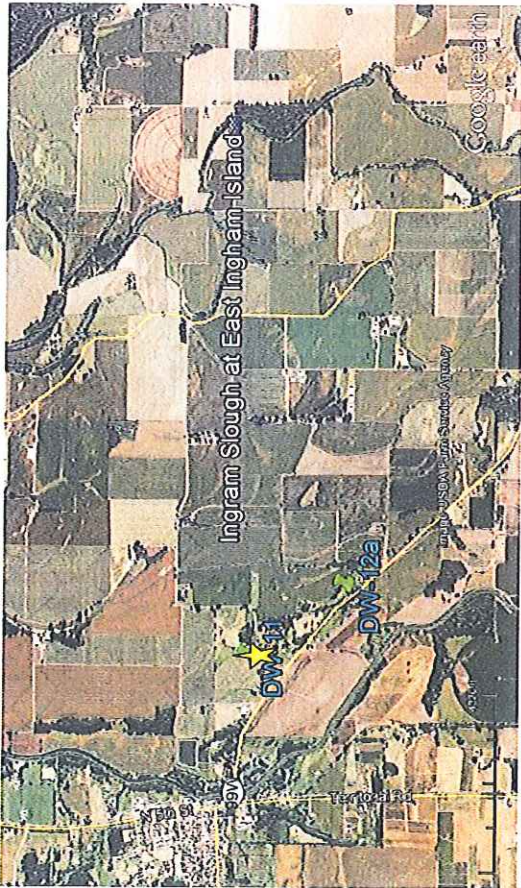
November-08	7.09
February-09	*
May-09	*
July-09	*
November-09	*
February-10	*
May-10	*
August-10	8.21
November-10	9.79
January-11	7.22
May-11	6.66
August-11	6.66
November-11	6.29
February-12	7.87
May-12	7.74
August-12	8.00
November-12	9.16
February-13	7.74
May-13	7.56

Std Deviation = 0.99  
 Nitrate values have INCREASED

Mean last 8 samples 7.63  
 Difference last 8 samples minus background 1.83



# Domestic Well DW-11



## first 9 events = background

August-06	6.21
November-06	7.44
February-07	6.52
May-07	5.61
August-07	6.17
November-07	4.12
February-08	9.58
May-08	5.62
August-08	5.30

Std Deviation = 1.53  
Background Mean = 6.29

## Rest of data

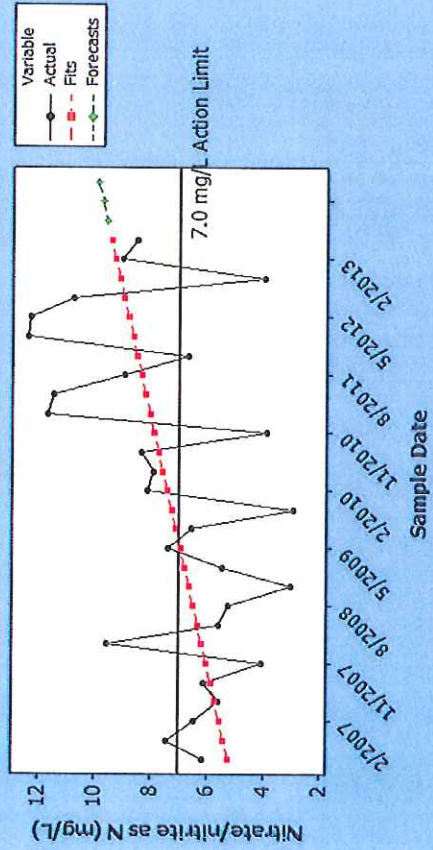
November-08	3.06
February-09	5.50
May-09	7.41
July-09	6.59
November-09	2.98
February-10	8.14
May-10	7.91
August-10	8.38
November-10	3.94
January-11	11.70
May-11	11.50
August-11	8.99
November-11	6.72
February-12	12.40
May-12	12.30
August-12	10.80
November-12	4.03
February-13	9.08
May-13	8.56

Std Deviation = 3.04  
Nitrate values have INCREASED

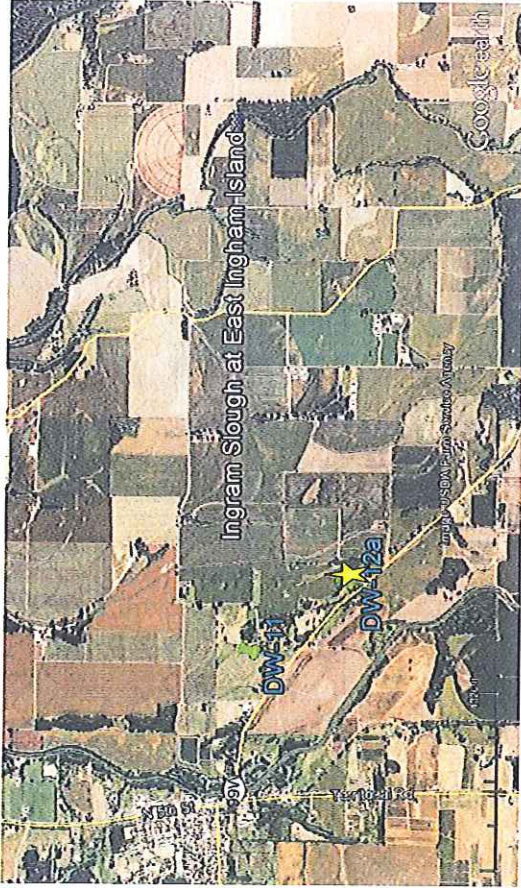
Mean last 8 samples 9.11  
Difference last 8 samples mean minus background 2.82

## DW-11 Trend Analysis for Nitrate as N (mg/L) 2013

Linear Trend Model  
 $Y_t = 5.142 + 0.154 * t$



# Domestic Well DW-12a



## first 9 events = background

August-06	0.02
November-06	<0.0050
February-07	<0.0050
May-07	0.03
August-07	0.04
November-07	0.09
February-08	0.06
May-08	0.05
August-08	0.04

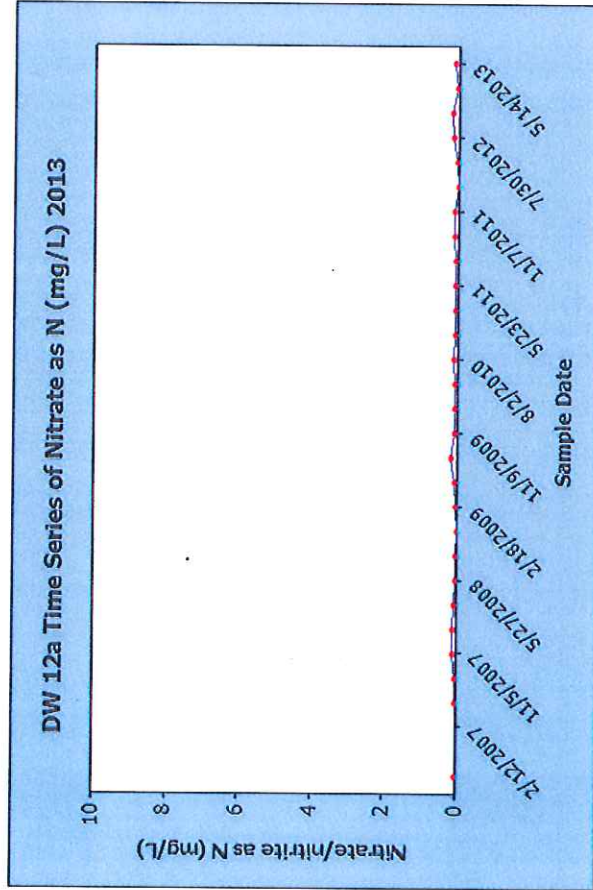
Std Deviation = 0.02  
Background Mean = 0.05

## Rest of data

November-08	0.01
February-09	0.03
May-09	0.06
July-09	0.15
November-09	0.05
February-10	0.07
May-10	0.06
August-10	0.09
November-10	0.08
January-11	0.05
May-11	0.07
August-11	0.10
November-11	0.11
February-12	0.01
May-12	0.04
August-12	0.13
November-12	0.15
February-13	0.04
May-13	0.09

Std Deviation = 0.04  
Nitrate values are  
STEADY

Mean last 8 samples  
Difference last 8 samples  
mean minus background  
0.08  
0.04



# Domestic Well DW-13



### first 9 events = background

August-06	5.22
November-06	5.50
February-07	7.60
May-07	5.82
August-07	6.26
November-07	6.18
February-08	5.85
May-08	5.57
August-08	6.05

Std Deviation = 0.69  
Background Mean = 6.01

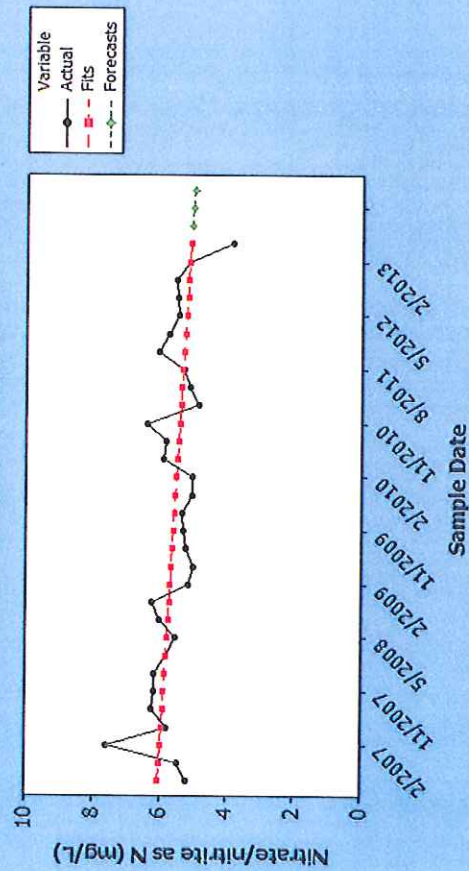
### Rest of data

November-08	6.28
February-09	5.17
May-09	5.05
July-09	5.25
November-09	5.35
February-10	5.07
May-10	5.94
August-10	5.84
November-10	6.42
January-11	4.89
May-11	5.16
August-11	5.34
November-11	6.10
February-12	5.77
May-12	5.48
August-12	5.51
November-12	5.55
February-13	5.18
May-13	3.89
Mean last 8 samples	5.35
Difference last 8 samples mean minus background	-0.65

Std Deviation = 0.57  
Nitrate values have  
DECREASED

### DW 13 Trend Analysis for Nitrate as N (mg/L) 2013

Linear Trend Model  
 $Yt = 6.105 - 0.030964 * t$



# Domestic Well DW-15



## first 9 events = background

August-06	4.98
November-06	1.84
February-07	4.32
May-07	4.62
August-07	5.57
November-07	5.25
February-08	4.24
May-08	4.51
August-08	4.78

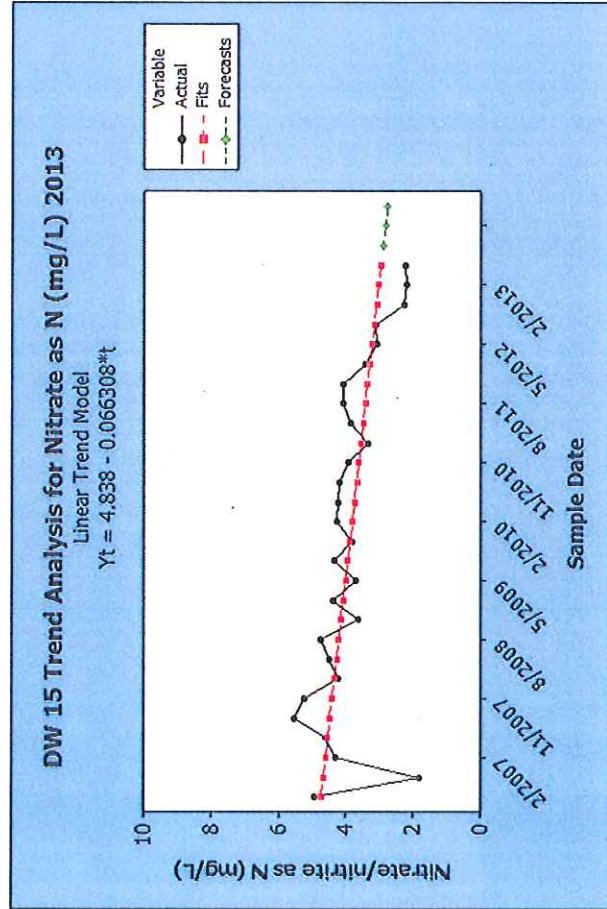
Std Deviation = 1.07  
Background Mean = 4.46

## Rest of data

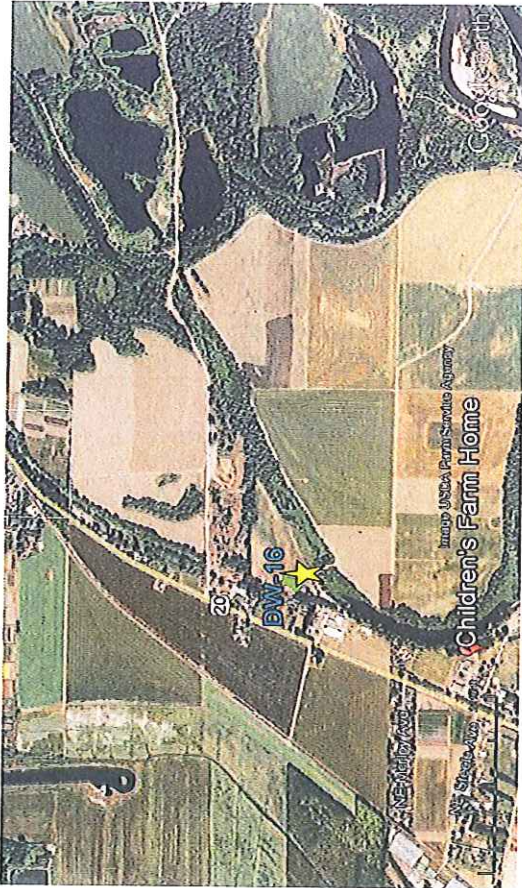
November-08	3.67
February-09	4.39
May-09	3.73
July-09	4.36
November-09	3.83
February-10	4.30
May-10	4.24
August-10	4.20
November-10	3.94
January-11	3.34
May-11	3.88
August-11	4.11
November-11	4.11
February-12	3.43
May-12	3.08
August-12	3.12
November-12	2.28
February-13	2.19
May-13	2.25

Std Deviation = 0.72  
Nitrate values have DECREASED

Mean last 8 samples 3.07  
Difference last 8 samples mean minus background -1.39



# Domestic Well DW-16



## first 9 events = background

August-06	4.66
November-06	4.35
February-07	4.00
May-07	4.37
August-07	5.74
November-07	5.05
February-08	4.46
May-08	4.86
August-08	5.97

Std Deviation = 0.66  
Background Mean = 4.83

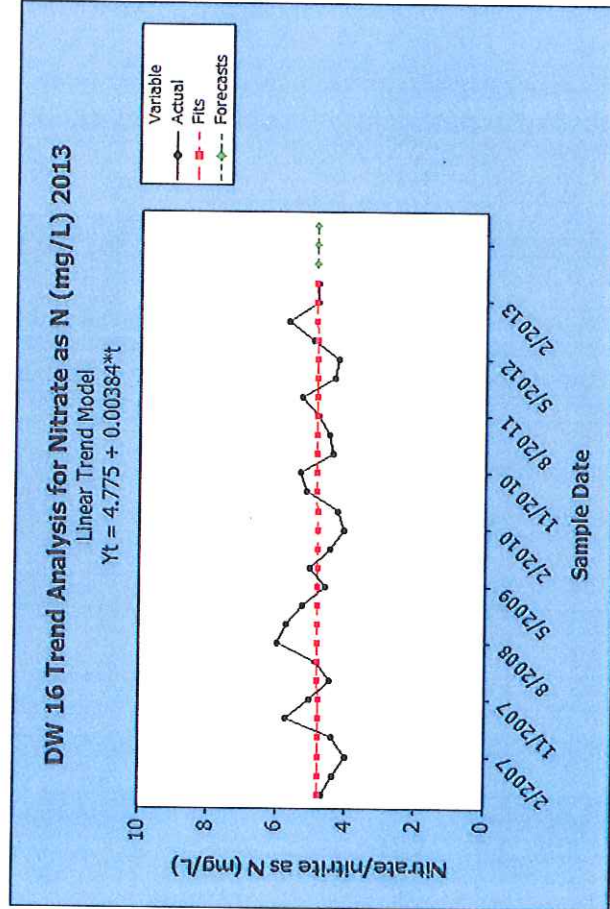
## Rest of data

November-08	5.73
February-09	5.24
May-09	4.60
July-09	5.02
November-09	4.47
February-10	4.04
May-10	4.24
August-10	5.15
November-10	5.32
January-11	4.40
May-11	4.48
August-11	4.82
November-11	5.30
February-12	4.36
May-12	4.24
August-12	4.96
November-12	5.70
February-13	4.87
May-13	4.87

Std Deviation = 0.49  
Nitrate values are  
STEADY?

Mean last 8 samples  
Difference last 8 samples  
mean minus background

4.89  
0.06



# Domestic Well DW-17



## first 9 events = background

August-06	15.60
November-06	14.80
February-07	15.10
May-07	12.00
August-07	12.10
November-07	13.90
February-08	13.30
May-08	11.00
August-08	11.10

Std Deviation = 1.74  
Background Mean = 13.21

## Rest of data

November-08	11.90
February-09	11.10
May-09	9.08
July-09	9.21
November-09	13.00
February-10	13.60
May-10	12.80
August-10	13.50
November-10	11.90
January-11	12.40
May-11	12.20
August-11	11.10
November-11	9.61
February-12	8.22
May-12	8.21
August-12	8.03
November-12	7.93
February-13	8.46
May-13	9.22

Std Deviation = 2.06  
Nitrate values have DECREASED

Mean last 8 samples  
Difference last 8 samples  
mean minus background  
-3.99

