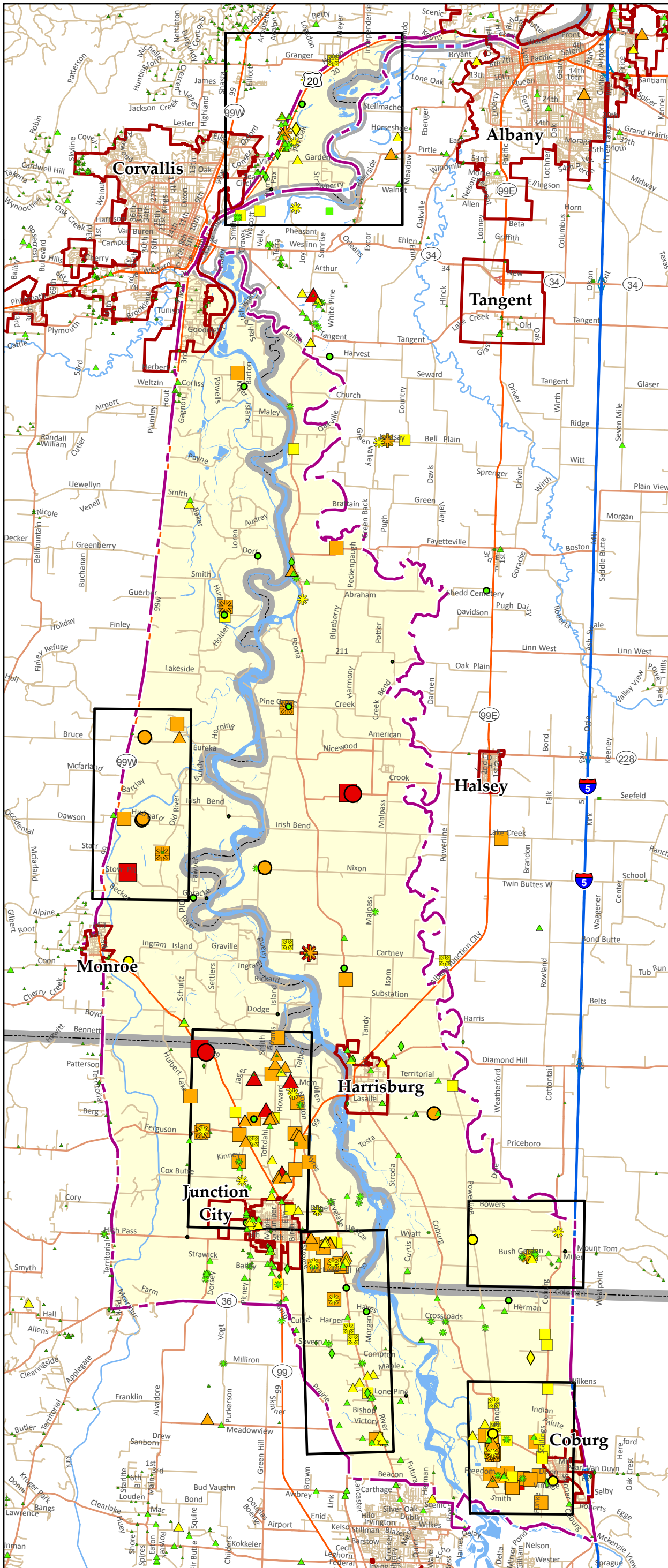


Southern Willamette Valley Groundwater Management Area



"Neighborhoods"

- Neighborhoods
- Groundwater Management Area
- City Limits
- County Boundary

Monitoring Program Wells 2015

Nitrate (mg/l) 2015 Avg

- 0.4 - 1.9
- 2.0 - 6.9
- 7.0 - 9.9
- 10.0 - 19.9
- 20.0 - 27.2

Public Water Systems

Nitrate (mg/l) 2011-2016 Avg

- 0.0 - 1.9
- 2.0 - 6.9
- 7.0 - 7.4

Real Estate Transaction Samples

Nitrate mg/l

- 0.0 - 1.9
- 2.0 - 6.9
- 7.0 - 9.9
- 10.0 - 19.9
- 20.0 - 100.0

One-Time Sampling Event 2009

Nitrate mg/l

- 0.0 - 1.9
- 2.0 - 6.9
- 7.0 - 9.9
- 10.0 - 19.9
- 20.0 - 35.9

One-Time Sampling Event 2002

Nitrate mg/l

- 0.0 - 1.9
- 2.0 - 6.9
- 7.0 - 9.9
- 10.0 - 19.9
- 20.0 - 28.0

